

**FLOOR PLAN**  
 SCALE: NTS  
 ARCH REF: 2/A2  
 QUANTITY: TYPE A - 1  
 TYPE B - 1  
 TYPE C - 2

**1 LEVEL 1**

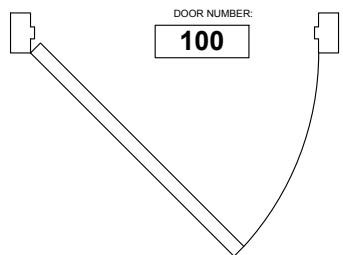
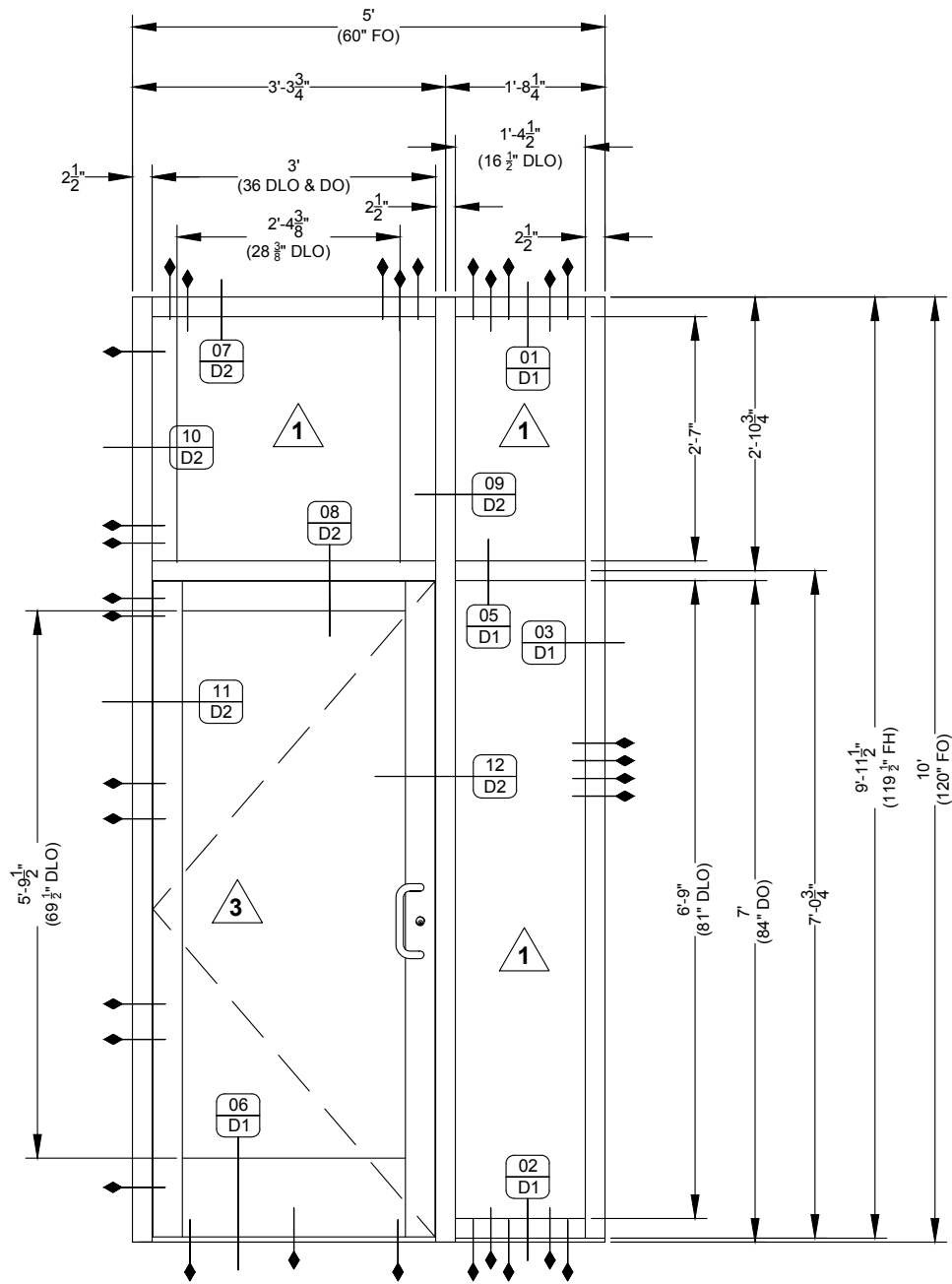
**GLASS WALL SYSTEM(S):**  
 KAWNEER 2 1/2" X 5" IR 501 ALUMINUM STOREFRONT FRAMING  
 KAWNEER 360 DOOR, ON IR 501 STOREFRONT FRAMING

NO.	DATE	BY	DESCRIPTION
1	10/29/19	fp	First Submittal

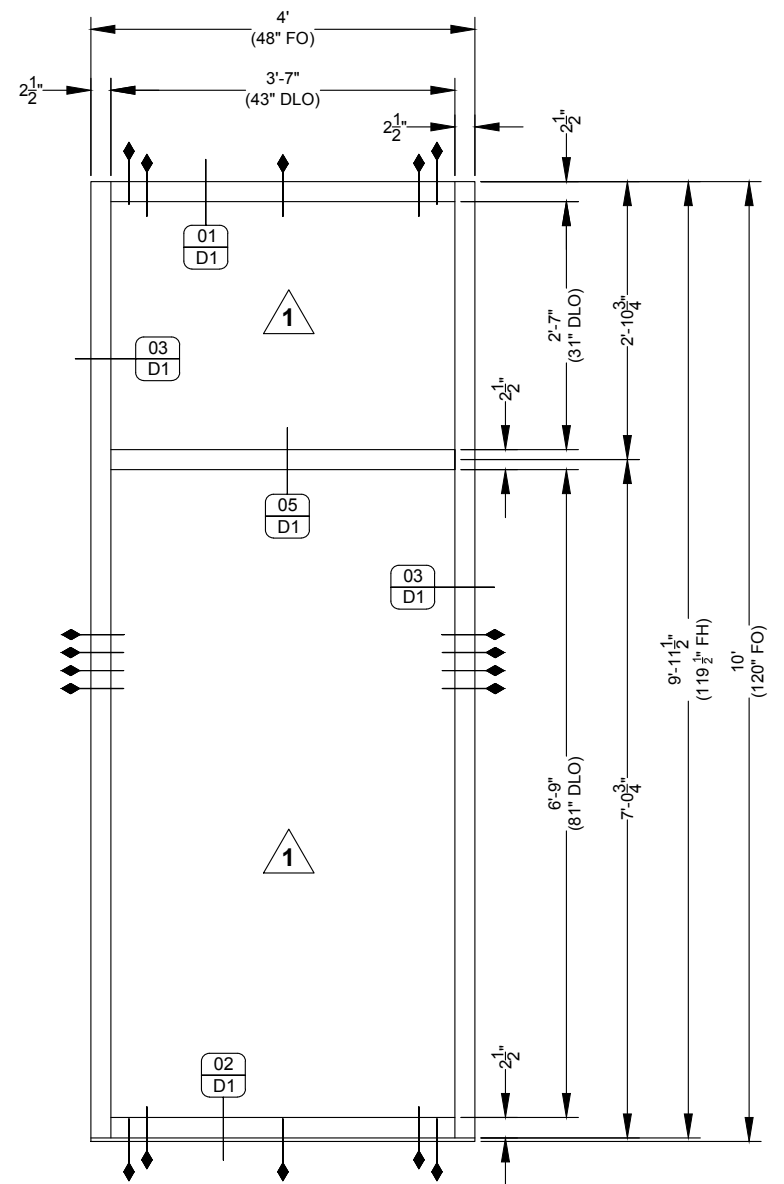
**CONTRACTOR'S GLASS PRODUCTS**  
 7701 WEBER RD, CORPUS CHRISTI, TX 78315  
 WORK (361) 854-8188 FAX (361) 854-4412

PROJECT: **WHITE BOX LEASE SPACE BUILDING RENOVATION**  
 DESIGNER: CHARLIE SIMS (361) 533-4517  
 GENERAL CONTRACTOR: KRAUSE CONSTRUCTION (361) 852-9551

PROJECT NO. CGP-1910-04  
 DRAWN BY: fp DATE: 10/29/19  
 SCALE: NTS  
 DRAWING: FLOOR PLANS  
 SHEET: P1



NOTE: SEE ANCHORING SHEET AND REFERENCE SHEET FOR ANCHORING DETAILS.



NOTE: SEE ANCHORING SHEET AND REFERENCE SHEET FOR ANCHORING DETAILS.

**ELEVATION**  
 QUANTITY: 01  
 SCALE: 1/2" = 1'-0"  
 ARCH REF: 2/A2  
 DOOR NUMBER(S): 100



**ALUMINUM STOREFRONT**  
 KAWNEER 2 1/2" X 5" IR 501 ALUMINUM STOREFRONT FRAMING  
 KAWNEER 350 DOOR ON KAWNEER IR 501 FRAMING

**ELEVATION**  
 QUANTITY: 01  
 SCALE: 1/2" = 1'-0"  
 ARCH REF: 2/A2



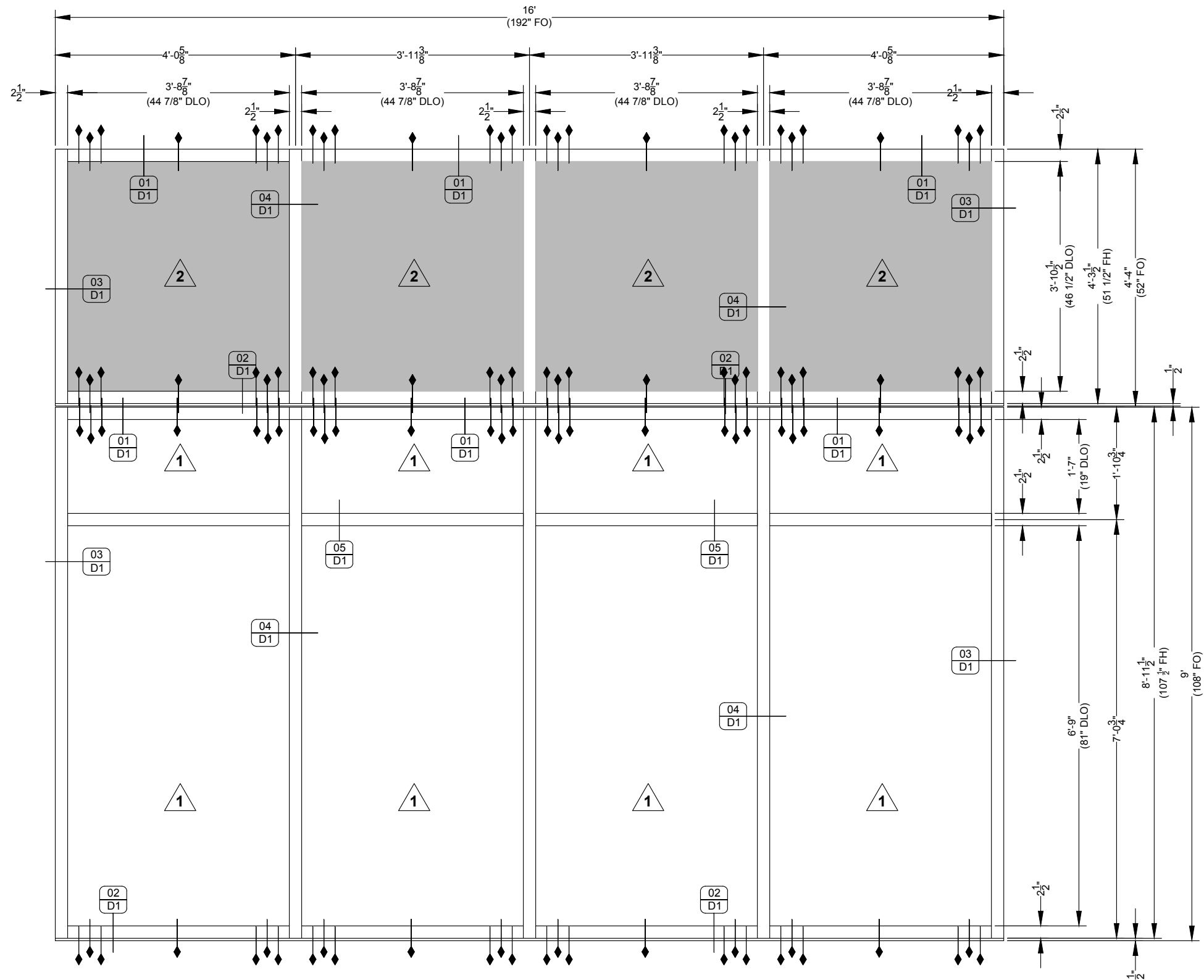
**ALUMINUM STOREFRONT**  
 KAWNEER 2 1/2" X 5" IR 501 ALUMINUM STOREFRONT FRAMING

NO.	DATE	DESCRIPTION
1	10/29/19	First Submittal

**CONTRACTOR'S GLASS PRODUCTS**  
 7701 WEBER RD, CORPUS CHRISTI, TX 78315  
 WORK (361) 854-8188 FAX (361) 854-4412

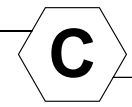
PROJECT: WHITE BOX LEASE SPACE  
**BUILDING RENOVATION**  
 DESIGNER: CHARLIE SIMS  
 (361) 533-4517  
 GENERAL CONTRACTOR: KRAUSE CONSTRUCTION  
 (361) 852-9851

PROJECT NO.	CGP-1910-04
DRAWN BY	fp
DATE	10/29/19
SCALE	1/2" = 1'-0"
DRAWING	ELEVATIONS
SHEET	E1



**ELEVATION**

QUANTITY: 2  
 SCALE: 1/2" = 1'-0"  
 ARCH REF: 2/A2



**ALUMINUM STOREFRONT**

KAWNEER 2 1/2" X 5" IR 501 ALUMINUM STOREFRONT FRAMING

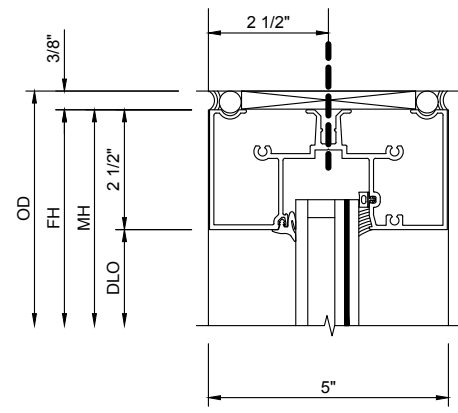
NOTE: SEE ANCHORING SHEET AND REFERENCE SHEET FOR ANCHORING DETAILS.

NO.	DATE	DESCRIPTION
1	10/29/19	First Submittal

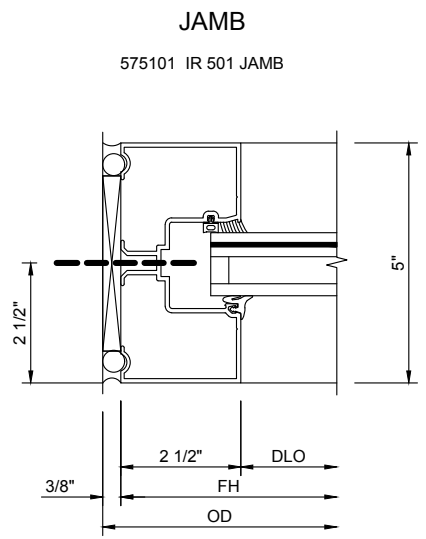
**CONTRACTOR'S GLASS PRODUCTS**  
 7701 WEBER RD, CORPUS CHRISTI, TX 78315  
 WORK (361) 854-8188 FAX (361) 854-4412

PROJECT: **WHITE BOX LEASE SPACE BUILDING RENOVATION**  
 DESIGNER: CHARLIE SIMS (361) 533-4517  
 GENERAL CONTRACTOR: KRAUSE CONSTRUCTION (361) 852-9651

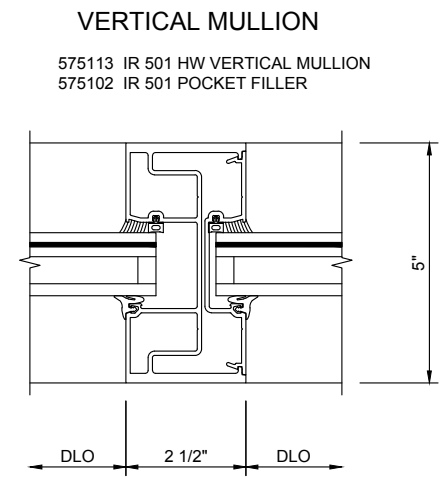
PROJECT NO.	CGP-1910-04
DRAWN BY	fp
DATE	10/29/19
SCALE	1/2" = 1'-0"
DRAWING	ELEVATIONS
SHEET	E2



**HEAD**  
 575112 IR 501 ONE-PIECE HEAD



**JAMB**  
 575101 IR 501 JAMB



**VERTICAL MULLION**  
 575113 IR 501 HW VERTICAL MULLION  
 575102 IR 501 POCKET FILLER

SCALE: 3" = 1'-0"  
 ARCH REF: N/A

**01 HEAD**

GLASS WALL SYSTEM TYPE:  
 KAWNEER 2 1/2" X 5" IR 501 ALUMINUM STOREFRONT FRAMING

SCALE: 3" = 1'-0"  
 ARCH REF: N/A

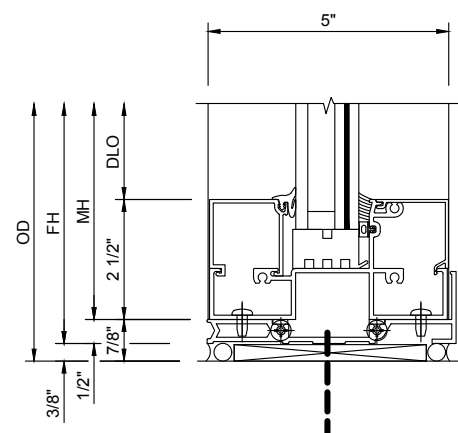
**03 JAMB AT WALL**

GLASS WALL SYSTEM TYPE:  
 KAWNEER 2 1/2" X 5" IR 501 ALUMINUM STOREFRONT FRAMING

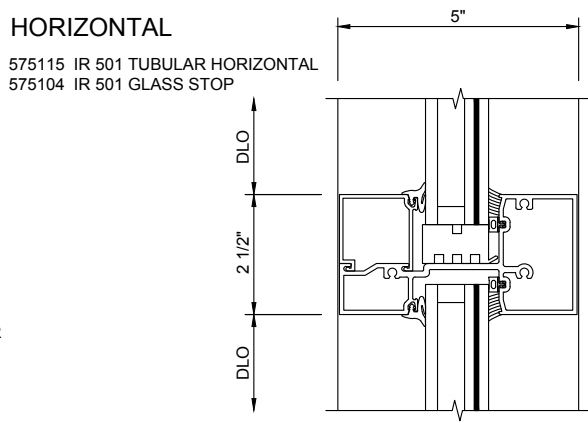
SCALE: 3" = 1'-0"  
 ARCH REF: N/A

**04 VERTICAL**

GLASS WALL SYSTEM TYPE:  
 KAWNEER 2 1/2" X 5" IR 501 ALUMINUM STOREFRONT FRAMING



**SILL**  
 575158 IR 501 OPTIONAL SILL  
 575157 FLASHING  
 575208 END DAM  
 575159 IR 501 OPTIONAL SILL COVER  
 575104 IR 501 GLASS STOP



**HORIZONTAL**  
 575115 IR 501 TUBULAR HORIZONTAL  
 575104 IR 501 GLASS STOP

SCALE: 3" = 1'-0"  
 ARCH REF: N/A

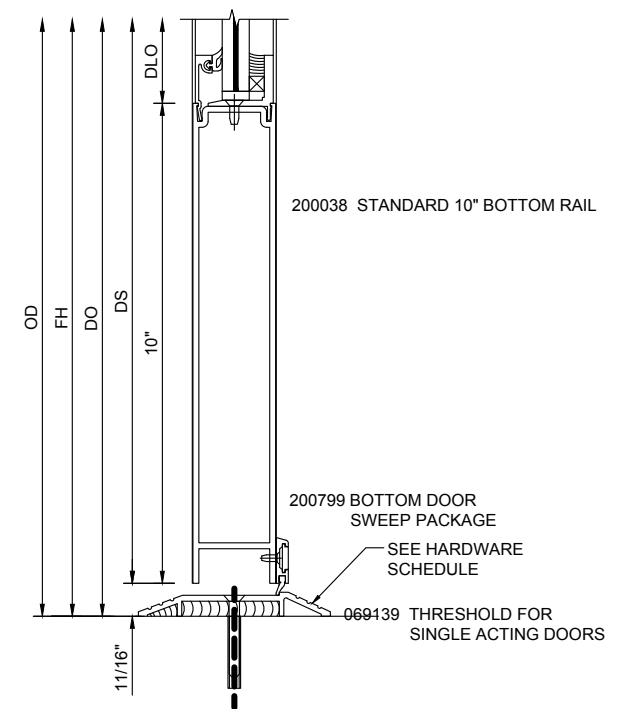
**02 SILL**

GLASS WALL SYSTEM TYPE:  
 KAWNEER 2 1/2" X 5" IR 501 ALUMINUM STOREFRONT FRAMING

SCALE: 3" = 1'-0"  
 ARCH REF: N/A

**05 HORIZONTAL**

GLASS WALL SYSTEM TYPE:  
 KAWNEER 2 1/2" X 5" IR 501 ALUMINUM STOREFRONT FRAMING



SCALE: 3" = 1'-0"  
 ARCH REF: N/A

**06 BOTTOM RAIL**

GLASS WALL SYSTEM TYPE:  
 KAWNEER DOOR

NO.	DATE	BY	DESCRIPTION
1	10/29/19	fp	First Submittal

**CONTRACTOR'S GLASS PRODUCTS**  
 7701 WEBER RD, CORPUS CHRISTI, TX 78315  
 WORK (361) 854-8188 FAX (361) 854-4412

PROJECT: **WHITE BOX LEASE SPACE BUILDING RENOVATION**  
 DESIGNER: CHARLIE SIMS (361) 533-4517  
 GENERAL CONTRACTOR: KRAUSE CONSTRUCTION (361) 852-9551

PROJECT NO.	CGP-1910-04
DRAWN BY	fp
DATE	10/29/19
SCALE	3" = 1'-0"
DRAWING	DETAILS
SHEET	D1